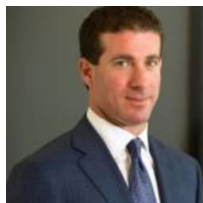


Orange County/ Inland Empire/ Long Beach 2024 Group Leader Summit Monday, October 28, 2024, 7:00 AM

Sheraton Universal Hotel
333 Universal Studios Dr.
Universal City, CA 91608

Josh Abel (GL)

Attorney
Abel Law Offices, PC
Attorney



Abel Law Offices is dedicated to integrity and excellence in the practice of law. We negotiate commercial contracts, develop litigation prevention strategies, and litigate disputes for companies engaged in commerce and real estate transactions.

2601 Main Street, Suite 1200
Irvine, CA 92614 United States
(949) 537-3490
josh@abelattorneys.com
www.abelattorneys.com

Irvine North (GL), Orange County Lawyers and Legal Professionals Affinity Group, South Coast,

Lisa Anderson (GL)

President
LMA Consulting Group
Consultant & Service



A business consultant known as "The Strongest Link in Your Supply Chain" who specializes in manufacturing strategy and end-to-end supply chain transformation that maximizes the customer experience and enables profitable, scalable, dramatic business growth.

2058 N Mills Ave Suite 532
Claremont, CA 91711-2812 United States
(909) 630-3943
landerson@lma-consultinggroup.com

Distributors & Manufacturers San Diego Affinity Group, Distributors & Manufacturers Affinity Group, Ontario Distributors/Manufacturers Affinity Group, Valley Distributors & Manufacturers Affinity Group, Collaboration of Professional Women Inland Empire Affinity Group (TM), Ontario (GL), Ontario 2,

Lindsay Ayers (GL)

Partner
CDF Labor Law LLP
Attorney



Lindsay is "The Employer Lawyer" and advises and defends California businesses in employment matters. She represents employers through class action, PAGA and individual plaintiff litigation; and counsels employers on hiring/firing & legal compliance.

18300 Von Karman Avenue Suite 800
Irvine, CA 92612 United States
9496221661
layers@cdflaborlaw.com
<https://www.cdflaborlaw.com/attorneys/bio/lindsay-ayers>

LGBTQ+Allies Affinity Group, Collaboration of Professional Women Orange County Affinity Group, Irvine North, Irvine OC (GL),

Natalie Barron (GL)

Financial Advisor, CFP, CEPA, CRPS
UBS Financial Services Inc.
Investment Advisor



As a Certified Financial Planner and Portfolio Manager, I help ensure that my clients and their loved ones are financially secure for the future. Through creating a comprehensive financial plan, I tailor their portfolios to accomplish their goals.

3030 Old Ranch Pkwy 300
Seal Beach, CA 90740 United States
(562) 343-9242
natalie.barron@ubs.com
www.ubs.com/team/cbmwm

South Bay Women's Affinity Group, Seal Beach (GL), Long Beach,

Anabella Bonfa (GL)

Business Litigation Attorney - Trade Secrets
Wellman & Warren LLP
Attorney



Ms. Bonfa specializes in cases involving theft of trade secrets from businesses, unfair competition and partnership disputes. This includes theft of customer lists, customer data and pricing information.

24411 Ridge Route Suite 200
Laguna Hills, CA 92653-1698 United States
(949) 580-3737
abonfa@w-wlaw.com

Newport Center 2, Newport-Irvine (GL), Collaboration of Professional Women Orange County Affinity Group,



Ron Brand (AGL,EC) (he/him)

Partner & General Counsel
Kahana & Feld LLP
Attorney

Managing employees is one of the most challenging demands employers and business owners have to face these days. With a dynamic labor and employment law practice, Ron assists companies effectively and efficiently to resolve their legal problems.

2603 Main Street, Suite 900
Irvine, CA 92614 United States
(949) 812-4781
rbrand@kahanafeld.com
www.kahanafeld.com

Human Capital Affinity Group, Orange County
Lawyers and Legal Professionals Affinity Group
(AGL), Irvine South,



Jeffrey Brown (GL, EC)

President
Brown & Associates Inc.
Consultant & Service

Specializing in operational process improvement working primarily with manufacturers and distributors. We improve gross margin and bottom-line profitability. Our clients typically see at least a 5% improvement in profitability.

1046 Calle Recodo, Unit J
San Clemente, CA 92673-7016 United States
(949) 350-5123
jbrown@jsbnetwork.com
www.jsbnetwork.com

Newport Center (GL), Distributors & Manufacturers
OC Affinity Group (EC), South Orange County,



Blaine Burch (GL)

Managing Partner
BHR Law Group, PC
Attorney

Blaine creates tailored estate plans that allow business owners and their families to successfully transfer their legacy to the next generation.

130 Vantis Drive, Suite 150
Aliso Viejo, CA 92656 United States
(949) 356-2352
blaine@bhrlawgroup.com
www.bhrlawgroup.com

Orange County Central (GL), Estate and Succession
Planning Affinity Group, Costa Mesa,



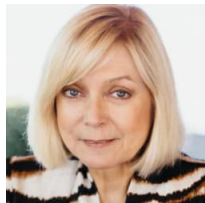
Karen Calhoun (GL)

M&A Attorney
Karen Calhoun Law Inc.
Attorney

M&A attorney guiding manufacturers, distributors and service providers through life-changing transactions with superior outcomes and clarity.

23 Corporate Plaza Drive, Suite 150
Newport Beach, CA 92660 United States
(714) 322-2202
karen@karencalhounlaw.com
<http://www.karencalhounlaw.com/>

Mergers & Acquisitions 3 (GL), Irvine OC,



Patti Cotton (GL)

Cotton Group, LLC
Consultant & Service

Thought partner, advisor and strategist to CEOs and family business owners managing change, growth, and succession. Executive and team coaching to develop leadership skills for greater performance and execution.

14505 Crystal View Terrace
Riverside, CA 92508 United States
(909) 229-4420
patti@patticotton.com
www.PattiCotton.com

Riverside (GL), South Orange County, Collaboration
of Professional Women Inland Empire Affinity Group,

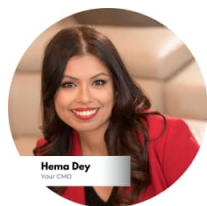


Kathy Dawson (GL) (she/her)
CEO & Chief People Officer
Dawson & Dawson National Search & Staffing
Human Resources

Kathy has 42 years' of exp. in the Nat'l Search and Staffing industry. Her firm is known for hiring industry experts as Recruiters who have assisted thousands of companies secure their next great new hire and thousands of candidates land great jobs.

29331 Kinglet Court
Laguna Niguel, CA 92677 United States
(877) 807-WORK
kathy.dawson@dawsondawsoninc.com
www.dawsondawsoninc.com

Orange County Real Estate Affinity Group, Estate and Succession Planning Affinity Group, Human Capital Affinity Group, Orange County Non-Profit Affinity Group, International Business Affinity Group, Collaboration of Professional Women Orange County Affinity Group, Orange County Lawyers and Legal Professionals Affinity Group (TM), Irvine South (GL), Irvine Metro,



Hema Dey (EC, DEI Co-Chair, GLA)
CEO | CMO | CTO | SEO2Sales™, SGE & GEO Director
Iffel International Inc
Marketing

AI + (SEO2Sales™+ SGE + GEO) is the standard of excellence in digital marketing that is profit and sales focused.

3780 Kilroy Airport Way, PMB260-Suite 200
Long Beach, CA 90806 United States
8554333522
hema@iffelinternational.com
<https://www.iffelinternational.com/>

Orange County DEI (Chair), Irvine South (GLA), Distributors & Manufacturers Affinity Group, International Business Affinity Group (EC), Bay Area International Affinity Group, Los Angeles DEI (Chair),

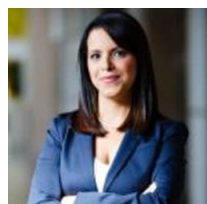


Marie DiSante (AGL, Host)
Managing Partner
CDF Labor Law LLP
Attorney

My firm and I advise employers on employment, human resources, union relations, immigration, and trade secret matters. We advise clients on how to avoid being sued by employees, and we defend them when sued about employment-related issues.

18300 Von Karman Avenue Suite 800
Irvine, CA 92612-6522 United States
(949) 622-1661
mdisante@cdflaborlaw.com
www.CDFLaborLaw.com

Irvine Metro, Orange County Lawyers and Legal Professionals Affinity Group, Collaboration of Professional Women Orange County Affinity Group (AGL), John Wayne Airport (Host), Human Capital Affinity Group,



Sanaz Farkhad (GL)
Attorney
Farkhad & Wang, APLC
Attorney

Sanaz Farkhad is a Certified Specialist in Family Law. Her belief is "even though you don't live together, you still have to live with each other." She mediates and litigates divorce, custody, child/spousal support and property division.

100 Spectrum Center Drive, Suite 900
Irvine, CA 92618-2956 United States
(949) 391-3118
sanaz@farkhadwang.com
www.farkhadwang.com

Collaboration of Professional Women Orange County Affinity Group, Newport Gateway 2, Irvine Concourse (GL),



Michael Finn (AGL, GLA)
Partner
GMGS Risk Management & Insurance
Service
Insurance

Risk Manager & Commercial Insurance Broker. Companies hire us to upgrade from an Insurance Broker to a Risk Management Services firm.

6201 Oak Canyon
Irvine, CA 92618 United States
(949) 559-3376
mikef@gmgs.com
www.gmgs.com

Newport Beach (GLA), Human Capital Affinity Group (AGL),



Todd Friedland (GL)
Business Litigation Lawyer
FBFK Law
Attorney

Business on business crime. Stephens Friedland LLP resolves business disputes with strategy, skill and discerning business judgment. We are problem solvers and advocates recognized by US News, Best Lawyers, Super Lawyers, and rated AV Preeminent.

575 Anton Blvd, Suite 750
Costa Mesa, CA 92626 United States
(949) 468-3200
todd@fbfk.law
www.sf-lawyers.com

Orange County Lawyers and Legal Professionals Affinity Group, Irvine Metro (GL), Orange County Central,



Mike Galvez (GL, EC)
Vice President, Principal Relationship
Manager, Team Lead
BMO
Banking & Finance

The Bearded Banker - experienced banker helping your clients with Owner Occupied real estate, equipment and working capital finance as well as getting paid and paying people.

(714) 519-9198
mike.galvez@bmo.com

Orange County Virtual 1 (GL), Cerritos (EC), Orange County Non-Profit Affinity Group,



Glenn Hamburger (AGL)
Vice President, Private Banker
J.P. Morgan Private Bank
Banking & Finance

Glenn Hamburger, CFP®, is a Private Banker at J.P. Morgan Private Bank, I advise a broad spectrum of affluent clients, including real estate investors, family offices, and successful professionals.

PO Box 63611
Irvine, CA 92602 United States
949-400-5135
glennhamburger@gmail.com

Estate and Succession Planning Affinity Group (GL), Irvine 2,



Dan Hamon (AGL, GLA)
Chief GSD (Gets-Stuff-Done) Officer for
Tech Companies
Tech Exec LLC
Consultant & Service

A Techie that Speaks Human™. I help technology companies Run Better, Grow Faster and Make More Money. My clients are technology entrepreneurs who want to build better software products to grow and succeed in their markets.

115 E Main St # A1B - 5D
Buford, GA 30518 United States
(626) 408-2801
dan@tech-exec.com
<https://tech-exec.com/>

Group Leader Acceleration Meeting, Gwinnett (GLA), Orange County Tech Affinity Group (AGL),



Gary Johnson (GL)
President
J2 Marketing Consultants
Marketing

Business development and marketing coach specializing in guiding attorneys to achieve their professional goals and optimize their legal practice.

39506 North Daisy Mountain Drive, Suite 112-110
New River, AZ 85086 United States
9499394986
garyj@j2marketingconsultants.com
www.j2marketingconsultants.com

Consultants & Coaches Affinity Group, Costa Mesa (GL), Irvine Central, Group Leader Acceleration Meeting,



David Kantar (GL)
 Director Government Affairs/Private
 Banking
 Financial Partners Credit Union
 Banking & Finance

1665 Scenic Ave.
 Costa Mesa, CA 92626 United States
 562-367-5764
 dkantar@fpcu.org

Newport Gateway 2 (GL), Irvine Concourse,

Federally Insured, billion dollar credit union open to residents and people who work in Orange County and most of Los Angeles County. We offer private banking to our depositors with far lower loan rates and less fees than banks. Mortgages, first-time buy



Steve Kwong (GL)
 Vice President- Senior Financial Advisor
 Merrill
 Investment Advisor

520 Newport Center Drive
 19th Floor
 Newport Beach, CA 92660 United States
 (949) 721-7296
 steve_kwong@ml.com

Orange County Metro, South Coast Metro (GL),

Please visit my profile on LinkedIn at <https://www.linkedin.com/in/steve-kwong-a5b1b112/> or at the Merrill Lynch's website http://fa.ml.com/steve_kwong



Kathleen McEntee (AGL, GLA)
 President
 Kathleen McEntee and Associates Ltd
 Marketing

79-405 Highway 111 Ste 9-486
 La Quinta, CA 92253-8300 United States
 (760) 262-4080
 kmcentee@kmcenteeassoc.com
 /www.kmcenteeassoc.com

Ontario Distributors/Manufacturers Affinity Group, Collaboration of Professional Women Inland Empire Affinity Group (AGL), South Bay Women's Affinity Group, Ontario (GLA), Chicago Women's Affinity Group,

Kathleen McEntee is a marketing expert who has 30+ years of experience in reaching prospects, customers and colleagues. She zeros in on the right medium with the right strategy, message and image. When Smart Business Matters, Marketing is Your Voice.



Barry Menzel (GL)
 managing director
 Training Funding Source
 Consultant & Service

1211 Electric Ave
 Seal Beach, CA 90740-6409 United States
 (562) 735-4195
 barry@trainingfundingsource.com
 www.TrainingFundingSource.com

Orange County DEI, Irvine Spectrum (GL), Orange County Metro, Distributors & Manufacturers San Diego Affinity Group, Group Leader Acceleration Meeting,

Training Funding Source monetizes clients employee training & on-the-job learning by converting this overhead expense into Revenue/Income = \$800-\$1,000 per employee per year. TFS is largest provider of Training Funding. This "Found Money" is for companie



Raylene Myerson (AGL, TM)
 Business Performance Advisor
 Insperty
 Human Resources

2211 Michelson Drive
 Suite 540
 Irvine, CA 92612 United States
 (714) 486-8114
 raylene.myerson@insperty.com
 https://www.insperty.com/

International Business Affinity Group (AGL), Collaboration of Professional Women Orange County Affinity Group, Bay Area Women's Affinity Group, Human Capital Affinity Group, Orange County Non-Profit Affinity Group, South Bay Women's Affinity Group, Bay Area International Affinity Group, Collaboration of Professional Women Inland Empire Affinity Group, Newport-Irvine,

I help CEO's and business owners with their human capital and compliance. Insperty services include traditional payroll & HR compliance with our PEO adds health benefits, workers compensation and EPLI.

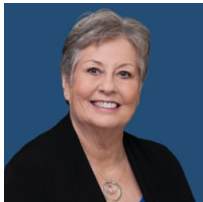


Sara Naheedy (GL) (she/her)
Owner/Founder at Sara Naheedy Law APC
Sara Naheedy Law APC
Attorney

I am a real estate attorney with a focus on residential and commercial real estate mediation and transactions. What makes me unique is that I have my California real estate broker's license.

2601 Main Street, Suite #1200
Irvine, CA 92614 United States
(949) 400-4956
sara@saranaheedylaw.com
www.saranaheedylaw.com

Long Beach (GL), Orange County DEI (Chair), Newport Gateway, Orange County Real Estate Affinity Group, Orange County Lawyers and Legal Professionals Affinity Group,



Anne Norris (GL)
Partner - Financial Advisor
Pelorus Capital Management
Investment Advisor

I advise clients on perserving wealth and sustaining family legacies. As an entrepreneur who grew enterprise from start-up to exit, sold to Fortune 500 company, I provide real-world experience to clients seeking wealth while building a business.

7700 Irvine Center Drive Suite 520
Irvine, CA 92618-3035 United States
(714) 902-2397
anorris@peloruscapital.net
/www.peloruscapital.net

Ontario 2, Corona (GL), Collaboration of Professional Women Inland Empire Affinity Group,



Nicole Nuzzo (GL)
Attorney
Nuzzo Law, APC
Attorney

I am a zealous and compassionate Certified Family Law Specialist. I help business owners & executives negotiate and litigate family law and divorce matters. I also prepare and negotiate premarital agreements.

18301 Von Karman Ave., Ste. 910
Irvine, CA 92612 United States
(949) 617-1481
nicole@nuzzolaw.com

Costa Mesa, Irvine Central (GL),



George A. Shewchuk (AGL,EC,Host)
Tax Partner - Owner - CPA, MST
Eide Bailly LLP
Accountant

I work with the millionaire next door's multiyear tax plan to tell their story in their entity individ trust & estate tax returns. Helping them understand their exit plan from their bus, real estate & life finding solutions to provide tax cash flow savings

4500 E. Pacific Coast Highway Suite 300
Long Beach, CA 90804 United States
(562) 494-1125
gshewchuk@eidebailly.com
www.eidebailly.com

Orange County Real Estate Affinity Group (AGL), Newport Center (EC), LAX/Long Beach Real Estate Affinity, Estate and Succession Planning Affinity Group,



Matthew Stein (GL)
Partner
LAW STEIN ANDERSON, LLP
Attorney

Matthew represents those entangled in probate litigation, including trust contests, will contests, breaches of fiduciary obligations, allegations of trustee wrongdoing and claims of elder abuse. When your inheritance is at issue, trust Matthew.

2601 Main Street Suite 1200
Irvine, CA 92614 United States
9495014800
mstein@lsalawyers.com
www.LSALawyers.com

Irvine North (GLA), Group Leader Acceleration Meeting, South Coast (GL), Orange County Lawyers and Legal Professionals Affinity Group,

**John Stephens (GL)**

Partner
FBFK Law
Attorney

575 Anton Blvd., Suite 750
Costa Mesa, CA 92626 United States
(949) 468-3200
jstephens@fbfk.law

I advocate for businesses ranging from small start-ups to multi-national corporations. I have experience successfully resolving disputes in many subject matter areas, including real estate, trade secrets, trademark infringement, unfair competition, frau

South Coast Metro, Orange County Metro (GL),
Orange County DEI,

**Saar Swartzon (GL)**

Principal
Cohn & Swartzon LLP
Attorney

1851 E 1st Street Suite 630
Santa Ana, CA 92705-4077 United States
(714) 547 - 5100
saar@legalhelp123.com
www.legalhelp123.com

As a personal injury attorney, I assist my clients in regaining their pre-injury health and obtaining just compensation for their injuries caused by another. I help people with car, truck, bicycle & pedestrian accidents, dog bites and wrongful death.

Irvine Concourse, Newport Beach (GL), Orange County Lawyers and Legal Professionals Affinity Group,

**Dinia Takacs (GL;EC)**

Vice President
The CEO University
Consultant & Service

P O Box 370
Seal Beach, CA 90740-0370 United States
8662347980
dt@ceou.org

As a business owner and former Fortune 100 Executive, I support executives, CEOs and solopreneurs through my CEO University Peer Advisory Boards and individual coaching. I use a holistic approach to bring out the best version of my clients.

Newport-Irvine, Collaboration of Professional Women Orange County Affinity Group, Bay Area Women's Affinity Group, Human Capital Affinity Group, Newport Center 2 (GL),

**Bill Torres (GL)**

Managing Partner
Bill Torres & Company, Inc.
Accountant

12800 Center Court Drive, Suite 455
Cerritos, CA 90703 United States
(323) 890-8180
billt@btcocpa.com

We assist companies who transact business internationally to navigate through the US tax reporting requirements.

Tax Masters Affinity Group, Cerritos (GL), Irvine Metro,

**Nicholle Trugman (AGL, Host, TM)**

Associate Vice President
OneDigital Health And Benefits
Insurance

1525 Cole Lane
Upland, CA 91784 United States
(909) 631-6762
ntrugman@onedigital.com
www.onedigital.com

Employee Benefits Strategist with over 10 years in the industry, working with CEO's, CFO's and Human Resources Professionals to develop long term strategic direction for their Employee Benefit Plans.

Irvine South (Host), Ontario Distributors/Manufacturers Affinity Group (AGL), Collaboration of Professional Women Inland Empire Affinity Group, Corona, Healthcare Advisors Affinity Group,


John Tulac (GL)

Attorney
John W Tulac, Attorney at Law
Attorney

I am a highly experienced international business transactions attorney helping my clients bridge the continents to build strong business relationships and make great contracts from exporting & importing to large scale infrastructure projects.

414 Yale Ave Suite H
Claremont, CA 91711-4357 United States
(909) 445-1100
jwulac@gmail.com
www.johntulac.com

Orange County DEI, Transactions & Transitions, Ontario 2 (GL), Ontario Distributors/Manufacturers Affinity Group (TM), Ontario (TM), International Business Affinity Group, Branding, Licensing, and IP Affinity Group,


Demosthenis Zeppos (GL)

Esq.
ZEPPOS LAW GROUP LLP
Attorney

I am a corporate and transaction tax planning attorney for both local and out-of state companies throughout the United States and internationally. I am a Certified Tax Specialist with the California Bar and have devoted my entire legal career to providi

300 Spectrum Center Drive, Suite 1550
Irvine, CA 92618 United States
(949) 727-1700
demo@zepposlaw.com
www.zepposlaw.com

Mergers & Acquisitions 3, Newport (GL),


Evelyn Zohlen (GL)

Regional Director and Certified Financial Planner™
Apella Wealth
Investment Advisor

Your Trusted Partner Through Life's Transitions. CFP® Specializing in serving women in transition as a fee-only Registered Investment Advisor providing comprehensive wealth management services through personal care and understanding.

5011 Argosy Ave., Suite 7
Huntington Beach, CA 92649 United States
714-971-0663
ezohlen@apellawealth.com
<https://apellawealth.com/locations/huntingtonbeach>

South Bay Women's Affinity Group, Long Beach Airport (GL), Collaboration of Professional Women Orange County Affinity Group, Cerritos,