

Los Angeles 2024 Group Leader Summit Monday, October 28, 2024, 7:00 AM

Sheraton Universal Hotel
333 Universal Studios Dr.
Universal City, CA 91608



Scott Anderholt (GL, Host)

Vice President
Hudson Financial Services
Financial Service

Longevity Risk, running out of money during retirement, is the #1 fear of individuals and families. We're financial advisors who mitigate this risk through wealth management and insurance strategies to guarantee a dignified and prosperous retirement.

31225 La Baya Dr. 104
Westlake Village, CA 91362-6304 United States
(818) 707-1000
scott_anderholt@planmembersec.com

Calabasas (GL), Group Leader Acceleration Meeting,



Chris Bandouveris (GL)

Principal
CenterPoint M&A Advisors
Financial Service

Chris Bandouveris has 29 years of experience in providing comprehensive merger & acquisition services for smaller middle-market companies (\$5-75 million value). CenterPoint has completed transactions for buyers & sellers in 35 different states throughout

21550 Oxnard Street Suite 960
Woodland Hills, CA 91367-7117 United States
(818) 593-7907
chris@centerpnt.com
www.centerpnt.com

Group Leader Acceleration Meeting, Transactions & Transitions, Sherman Oaks 2 (GL), Ventura,



David Barulich (AGL)

Principal
Profundium, Inc.
Banking & Finance

Profundium closes challenging bank loans for your clients through its deep relationships with experienced, competent, and motivated commercial bankers. Real estate, equipment, working capital for investors, business owners, non-profits.

890 S Rosemead Blvd
Unit 21
Pasadena, CA 91107 United States
626-365-0440
david@profundium.com
www.profundium.com

LAX/Long Beach Real Estate Affinity, San Gabriel Valley Real Estate Affinity Group (AGL), Valley Real Estate Affinity Group, Pasadena 4, Group Leader Acceleration Meeting,



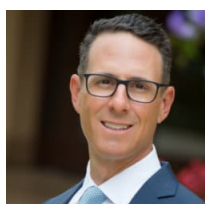
Anthony Behar (GL, EC)

Executive Vice President/Partner
Major Properties
Real Estate

Anthony Behar, Executive Vice President and Partner, has been working for Major Properties since 2002. He specializes in sales, leasing and marketing of commercial and industrial real estate throughout the greater Los Angeles areas.

1200 W Olympic Blvd
Los Angeles, CA 90015 United States
(213) 747-8426
anthony@majorproperties.com
<https://www.majorproperties.com/>

Valley Real Estate Affinity Group, Group Leader Acceleration Meeting, Distributors & Manufacturers Affinity Group (TM), Real Estate Group - Greater Los Angeles (EC), Downtown Los Angeles 3 (EC), Studio City (GL),



Joey Behrstock (GL)

Partner
Paradigm Gilbert
Insurance

My work consists of insurance and estate-planning. Helping individuals and businesses protect, accumulate, distribute and transfer wealth.

(310) 720-0382
joeyb@paradigmgilbert.com

Group Leader Acceleration Meeting, Entertainment 1 (GL), Beverly Hills 2,


Ken Berke (GL, DEI Co-Chair)

Berke Law Group, A.P.C.
Attorney

Corporate, real estate, securities, environmental and cannabis/hemp/CBD transactional-only practice. With extensive in-house and company-ownership experience, Ken brings a "business person's" perspective to practicing law.

22287 Mulholland Hwy., Ste 550
Calabasas, CA 91302-4011 United States
(844) 909-9600
kberke@berkelaw.com
www.berkelaw.com

Group Leader Acceleration Meeting, Woodland Hills 3 (GL), SoCal Cannabis Affinity Group (EC), Valley Lawyers Affinity Group, Calabasas, LGBTQ+Allies Affinity Group, Los Angeles DEI (Chair),


Polina Bernstein (GL)

Mediator and Attorney at Law
Bernstein & Friedland, P.C.
Attorney

Over 20 years experience as an employment attorney and more recently mediator who focuses on employment law disputes. Represent individuals and companies in employment litigation and advise companies on employment law compliance.

16000 Ventura Blvd Suite 1000
Encino, CA 91436-2762 United States
(818) 817-7570
polina@laemploymentcounsel.com
www.laemploymentcounsel.com

LGBTQ+Allies Affinity Group, Encino 3 (GL), Encino 2, Group Leader Acceleration Meeting,

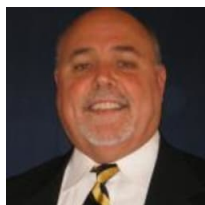

Maureen Bernstein (GL)

Principal
Newfront Insurance
Insurance

Commercial Insurance & Risk Management Services to Businesses, with a specialty in providing coverage for Non-Profit Organizations as well as professional firms, manufacturers, entertainment, nonprofit organizations, and technology companies

13210 Mindanao Way
Marina del Rey, CA 90292 United States
(818) 259-6443
maureen.bernstein@newfront.com
www.newfront.com

Beverly Hills 3 (GL), Middle Market Affinity Group, Group Leader Acceleration Meeting, Boston Non-Profit Affinity Group, Family Business Affinity Group, South Bay Women's Affinity Group, Branding, Licensing, and IP Affinity Group, Women's Affinity Group, Orange County Non-Profit Affinity Group, Non-Profit Affinity Group, Westside 3,


Steve Brodhead (GL)

Principal
The M&A Group US
Financial Service

We provide lower- and micro-middle market business Owners expert Fortune 500 level M&A advisory services, exceptional resources, together with unique and focused transactional expertise.

609 Deep Valley Drive Suite 320W
Rolling Hills Estates, CA 90274 United States
(310) 375-6960
sbrodhead@tmag.us
www.tmag.us

Capital Markets Affinity Group, Group Leader Acceleration Meeting, Middle Market Affinity Group, South Bay 2 (GL),


John Celic (GL)

Partner / Mortgage Broker
Source One Finance Inc
Banking & Finance

Over 30 years experience in mortgage lending. Graduated from USC School of Business. Member of the Kappa Sigma Fraternity. Specializing in conventional, FHA, VA, and reverse mortgage.

2441 Honolulu Ave. Suite 160
Montrose, CA 91020-2508 United States
(626) 296-9000
john@jcelic.com

Group Leader Acceleration Meeting, San Gabriel Valley Real Estate Affinity Group, Pasadena 3 (GL), Pasadena 6,



Griselda Cervantes (GL)
Commercial Lender - SVP Team Lead
Mission Valley Bank
Banking & Finance

Dedicated to providing customized financial solutions to growing privately-held businesses with Account Receivable Financing, SBA and Lines of Credit. Loans from \$500k - \$7,000M. Industries: CRE, Food manufacturing/distribution, Aerospace, etc.

Pasadena, CA United States
(831) 600-5565
griseldacervantes630@gmail.com
<https://missionvalleybank.com/>

East Valley Women's Affinity Group, Group Leader Acceleration Meeting, Pasadena 8 (GL), Pasadena 6, Transactions & Transitions, San Gabriel Valley Real Estate Affinity Group (TM),



Scott Clauson (GL)
Founder / CEO
Clauson Arts
Marketing

I help business build their own success through branding and marketing. My company gives emphasis to design and messaging to help market your business, build loyalty, and increase revenue. Branding, Logos, Websites, Graphic Design, Print, Apparel

123 N. Sunset Pl
Monrovia, CA 91016 United States
(626) 484-7480
scott.clauson@gmail.com
clausonarts.com

Pasadena 1 (GL), Transactions & Transitions, Branding, Licensing, and IP Affinity Group, Group Leader Acceleration Meeting, Downtown Los Angeles 1,



Richard Clayman (GL)
Principal
Cloudwalker Videoworks
Marketing

A filmmaker in a sea of videographers. Network quality live-action and animated video for websites, corporations, non-profits, and product, written, directed, produced, and edited by a multiple award-winning producer/director.

9415 Culver Blvd, 2nd Floor
Culver City, CA 90232 United States
(310) 251-0434
richard@cloudwalkerfilms.com

Distributors & Manufacturers Affinity Group, Camarillo 1, Group Leader Acceleration Meeting, Branding, Licensing, and IP Affinity Group, Middle Market Affinity Group, Culver City (GL), Los Angeles Lawyers and Legal Professionals Affinity Group,



Janice Cohen (AGL, EC)
Reverse Mortgage Advisor
Mutual of Omaha Reverse Mortgage
Banking & Finance

I am a reverse mortgage advisor, specializing in assisting senior homeowners tapping into the equity in their homes to enhance retirement. Reverse mortgage proceeds can be used for monthly income, a line of credit or to extinguish an existing mortgage.

416 South Reese Place
Burbank, 91506
(888) 740-9573
jcohen@mutualmortgage.com
<https://mutualreverse.com/janice-cohen/>

East Valley Women's Affinity Group (AGL), Century City 4 (TM), Real Estate Group - Greater Los Angeles, LA Estate and Succession Planning Affinity Group, Valley Estate and Succession Planning Affinity Group, Seniors and Special Needs Affinity Group (EC), Conejo Valley Real Estate Affinity Group, Pasadena Estate and Succession Planning Affinity Group (EC), LGBTQ+ Allies Affinity Group, Westlake Estate and Succession Planning Affinity Group, Women's Affinity Group, Valley Women's Affinity Group, Glendale 1, Tax Masters Affinity Group, Group Leader Acceleration Meeting, San Gabriel Valley Real Estate Affinity Group,

**Tim Colbert (GL)**

Account Director
Epiq
Consultant & Service

Legal Technology & Workflow Consultant giving attorneys a competitive advantage by utilizing AI to find critical evidence faster so they can win their case.

5000 Palm Drive
La Canada Flintridge, CA 91011 United States
(818) 486-2522
timothy.colbert@epiqglobal.com
www.epiqglobal.com

Group Leader Acceleration Meeting, Downtown Los Angeles 1 (GL), Glendale 1, Los Angeles Lawyers and Legal Professionals Affinity Group,

**Robert Curtis (GL)**

Managing Partner
Foley Bezek Behle & Curtis, LLP
Attorney

Robert is an elite, big-case litigator who has achieved record jury verdicts and over \$1.1 billion in settlements. Robert has robust litigation experience in complex business and real estate litigation, class actions and wildfire-based litigation.

15 W. Carrillo St.
Santa Barbara, CA 93101-8215 United States
(805) 962-9495
rcurtis@foleybezek.com
www.foleybezek.com

Group Leader Acceleration Meeting, Santa Barbara 1 (EC), Moorpark, Ventura 2 (GL),

**Brian Davidoff (AGL)**

Partner
Greenberg Glusker
Attorney

Corporate restructuring, bankruptcy & workouts. Represents debtors & creditors, creditors committees, distressed company purchasers & lenders. Also counsel to growth companies assisting them in business transactions and corporate finance.

2049 Century Park East, 26th Floor
Los Angeles, CA 90067 United States
(310) 201-7520
bdavidoff@greenbergglusker.com

M&A/Capital Formation Group (AGL), Century City 7, Group Leader Acceleration Meeting,

**Colin Dunn (GL)**

Senior Discovery Consultant
iDISCOVER
Consultant & Service

I work with Law Firms and Corporate Legal Departments with their E- Discovery and Paper Discovery spend with our proprietary, web-based electronic review tool, Lumix.

8909 West Olympic Boulevard
Suite 100
Beverly Hills, CA 90211 United States
(310) 556-7777
cdunn@idiscoverglobal.com

Group Leader Acceleration Meeting, Century City 4 (GL), South Coast, LGBTQ+Allies Affinity Group,

Eric Erenstoff (AGL) (he/him)
E3 Capital Partners Finance Brokerage &
Catalytic Leadership- Facilitator/Coach
E3 Capital Partners & ElevateID.org Peak
Performance
Consultant & Service



Consulting/Coaching & Real Estate
Brokerage/Finance/Consultancy

4533 MacArthur Boulevard
Suite #A5101
Newport Beach, CA 92660 United States
(310) 402-2966
eric@e3capitalpartners.com
www.EricErenstoff.com &
www.E3CapitalPartners.com

Valley Estate and Succession Planning Affinity Group, Consultants & Coaches Affinity Group, LAX/Long Beach Real Estate Affinity, Start Up and Entrepreneurship Affinity Group, Estate and Succession Planning Affinity Group, Group Leader Acceleration Meeting, Transitioning Business Advisors - New England Affinity Group, Irvine OC, International Business Affinity Group, LGBTQ+Allies Affinity Group, Branding, Licensing, and IP Affinity Group, Los Angeles Lawyers and Legal Professionals Affinity Group, Innovation Affinity Group, Real Estate Group - Greater Los Angeles (AGL), SoCal Cannabis Affinity Group, LA Estate and Succession Planning Affinity Group, Seniors and Special Needs Affinity Group,

Kevin Farrell (GL)
President
Farrell Financial, Inc.
Investment Advisor

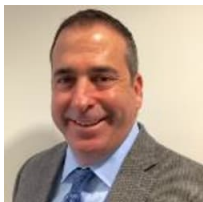


I identify and implement the most suitable qualified and non-qualified plans for small-medium size companies. I am a certified financial planner and an independent registered investment advisor. I provide complete/thorough plans to business owners.

100 E. Thousand Oaks Blvd. Suite 188
Thousand Oaks, CA 91360 United States
(818) 874-4005
kevinfarrell@farrellfinancialinc.com

Beverly Hills 2 (GL), Westlake Estate and Succession Planning Affinity Group (TM), Start Up and Entrepreneurship Affinity Group, Group Leader Acceleration Meeting, Westlake 4,

Dan Fein (AGL)
Insurance Broker and Risk Manager
Alkeme Insurance
Insurance

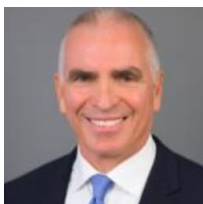


Insurance broker providing coverage review and assessment for companies. Advise on purchasing the appropriate insurance coverage while providing the best pricing.

111 Corporate Dr. #200
Ladera Ranch, CA 92694 United States
(310) 529-6596
dfein@alkemeins.com

Distributors & Manufacturers Affinity Group, Westwood, Transactions & Transitions (AGL), Capital Markets Affinity Group, Family Business Affinity Group, Middle Market Affinity Group, Group Leader Acceleration Meeting,

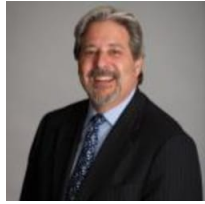
Mark Fingerman Esq., LL.M (GL)
Mediator & Teacher
Fingerman Mediation | Functional
Mindfulness
Attorney



Mediator for civil disputes. Functional Mindfulness Teacher.

CA United States
(619) 736-5401
mark@markfingerman.com
www.FingermanMediation.com

Westlake Lawyers Affinity Group, Los Angeles Lawyers and Legal Professionals Affinity Group, Brentwood (GL), Valley Lawyers Affinity Group, Westwood, Group Leader Acceleration Meeting,

**E. Mark Fishman (GL)**

Shareholder/Partner
Actuaries Unlimited, Inc.
Consultant & Service

Practicing in Los Angeles since 1982 specializing in the creative design, implementation & administration of Defined Benefit, Cash Balance, 401k) & Profit Sharing Plans. Mark is a licensed Enrolled Actuary & Shareholder-Partner of Actuaries Unlimited.

16000 Ventura Blvd., Suite 915
Encino, CA 91436-2769 United States
(818) 235-1620
mfishman@actuariesunlimited.com
www.actuariesunlimited.com

Group Leader Acceleration Meeting, Encino 2 (GL),
Newport-Irvine, Encino 1,

**Cindy Flynn (AGL, EC) (she/her)**

Employment Defense Attorney
Hackler Flynn & Associates
Attorney

Employment Defense. We represent employers in drafting employment agreements/severances/releases and defend businesses in employment lawsuits for claims of wage and hour, discrimination, sexual harassment, wrongful termination PAGA and class actions.

479 S. Marengo Ave.
Pasadena, CA 91101 United States
(323) 247-7030
cindy@hacklerflynnlaw.com
www.hacklerflynnlaw.com

Glendale 1, Pasadena 3 (TM), Women's Affinity Group, Group Leader Acceleration Meeting, East Valley Lawyers Affinity Group (AGL), Corona (EC),

**Joan Ford (AGL) (she/her)**

Managing Partner
Strategic Management Group
Consultant & Service

Joan Ford is a nonprofit consultant with a 20 year track record of optimizing and fundraising. Services include strategic planning, fundraising planning and execution, board retreats and development and grant writing.

7838 Airport Blvd
Los Angeles, CA 90045-3141 United States
3104002505
joan@strategicmanagement.info
joanfordfundraising.com

South Bay Women's Affinity Group, South Bay 2 (EC), Non-Profit Affinity Group (AGL), Group Leader Acceleration Meeting,

**Jeff Forster (GL)**

Senior Vice President
Morgan Stanley
Investment Advisor

Corporate Retirement Director, Certified Investment Management Analyst (CIMA)

1014 Santa Barbara Street
Santa Barbara, CA 93101-2126 United States
(805) 564-7908
jeffrey.p.forster@morganstanley.com
advisor.morganstanley.com/the-forster-group

Santa Barbara 2 (GL), Ventura 2, Group Leader Acceleration Meeting,

**Jonathan Forster (GL)**

Partner
Weinstock Manion
Attorney

Jonathan Forster designs and implements multi-generational estate planning strategies for high net worth families to achieve their personal, charitable and business objectives while minimizing estate taxes.

1875 Century Park East Suite 2000
Los Angeles, CA 90067-2516 United States
(310) 553-8844
jforster@weinstocklaw.com

Santa Monica 6 (GL), Century City 2, Group Leader Acceleration Meeting,



Garry Gekht (GL)

Family Law Attorney
LAW OFFICES OF KAPLAN, TROPE &
GEKHT
Attorney

Family Law litigator with a unique forensic accounting background focusing on international, LGBT and financially complex matters.

10866 Wilshire Blvd., Suite 1250
Los Angeles, CA 90024 United States
3104730798
garry@ktg.law

Group Leader Acceleration Meeting, LGBTQ+Allies Affinity Group, West Hollywood (GL),



Carol Glover (GL)

Real Estate Advisor
Engel & Völkers
Real Estate

Manhattan Beach native & Real Estate Triple Threat™: lawyer, real estate developer, real estate broker. Probate/trust specialist. Financial advisors, CPAs & estate-planning counsel bring me in as a Realtor® for complex residential real estate sales.

1147 Highland Ave
Manhattan Beach, CA 90266 United States
(310) 999-9195
carol@carolglover.com
www.engelvoelkers.com/en/

LGBTQ+Allies Affinity Group, LAX/Long Beach Real Estate Affinity, Pacific Business Corridor 1 (GL), South Bay Women's Affinity Group, South Bay 3, Group Leader Acceleration Meeting,



Heath Goldman (AGL;EC)

President/CEO
ICON Wealth & Legacy Partners
Financial Service

Our unique 6 step planning process which includes estate, succession, income tax and asset protection, retirement, charitable and legacy planning used in collaboration with a client's key advisors, helps with the creation of an ideal financial plan

5057 Matilija Avenue
Sherman Oaks, CA 91423-1237 United States
(818) 981-7184
heathg@iconwlp.com

Valley Estate and Succession Planning Affinity Group (AGL), Woodland Hills 3, Transactions & Transitions (EC), Valley Distributors & Manufacturers Affinity Group, Group Leader Acceleration Meeting, Orange County Real Estate Affinity Group, Distributors & Manufacturers San Diego Affinity Group, MSA/Capital Formation Group, Corporate Deal Professionals Affinity Group, Real Estate Group - Greater Los Angeles, San Gabriel Valley Real Estate Affinity Group, Distributors & Manufacturers Affinity Group, Middle Market Affinity Group, Valley Real Estate Affinity Group (EC),



Jennifer Goldstein (AGL;EC)

Broker
Keller Williams
Real Estate

Top 1% of Realtors. I'm known as the "Senior Empowering Guru". I empower Seniors to make informed decisions about how to stay in their home and do it safely and/or when the time comes how to sell their home to receive the most profits!

2308 mathews ave. unit 2
REDONDO BEACH, CA 90278 United States
(310) 462-3838
jennifer@seniorempoweringguru.com
Keller williams

LGBTQ+Allies Affinity Group, LAX/Long Beach Real Estate Affinity (AGL), South Bay Women's Affinity Group (EC), South Bay 3, Seniors and Special Needs Affinity Group, LA Estate and Succession Planning Affinity Group, San Gabriel Valley Real Estate Affinity Group, Real Estate Group - Greater Los Angeles, Group Leader Acceleration Meeting,



Steve Goldstein (EC, GL)
 President
 Payroll Management Solutions, Inc.
 Human Resources

Over 40 years experience helping employers address their payroll and tax filing concerns, reduce the cost and risk associated with payroll taxes, and protect them from exposure to the IRS and EDD, saving them time and money.

5777 W Century Blvd Suite 910
 Los Angeles, CA 90045-5925 United States
 (310) 491-3467
 steve@payrollmanagementsolutions.com
 www.PayrollManagementSolutions.com

South Bay 4 (GL), South Bay Classic (EC), Group Leader Acceleration Meeting,



James Gorton (GL)
 Partner
 Gorton Janosik & Poxon LLP
 Attorney

Gorton Janosik & Poxon specializes in estate planning, trusts and trust administration, business succession planning and probate, conservatorship and guardianship practice

909 E Green Street
 Pasadena, CA 91106-2906 United States
 (626) 793-6215
 jgorton@gjpatorneys.com

Pasadena Estate and Succession Planning Affinity Group, San Gabriel Valley Real Estate Affinity Group, Pasadena 3, East Valley Lawyers Affinity Group, Pasadena 4 (GL), Group Leader Acceleration Meeting,

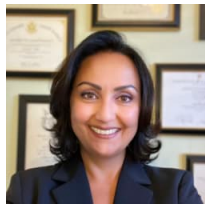


Gideon Grunfeld (GL) (he/him)
 President
 Rainmaking For Lawyers
 Consultant & Service

I am a former human resources executive, economics consultant, and big-firm business litigator. I bring those experiences to bear to help lawyers and law firms practice more productively and profitably.

8465 Wilshire Blvd Suite 300
 Beverly Hills, CA 90212-2509 United States
 (310) 734-6073
 gideon@rainmakingforlawyers.com
 www.rainmakingforlawyers.com

Brentwood, Downtown Los Angeles 4 (GL), Group Leader Acceleration Meeting,

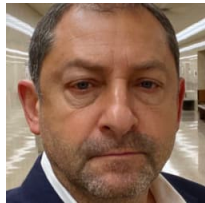


Nikki Hashemi (GL, EC)
 Estate Planning, Trusts, and Probate
 Attorney
 Acorn Law P.C.
 Attorney

Estate Planning, Trusts & Probate. Serving Clients throughout California with precision, empathy, and patience.

310 N. Westlake Blvd Suite 100
 Westlake Village, CA 91362 United States
 (805) 409-3878
 nikki@acornlawpc.com
 www.acornlawpc.com

Santa Clarita Valley (GL), Westlake 8 (EC), Group Leader Acceleration Meeting,



Zeev Haskal (GL)
 Partner
 Mega Group Private Investigations, Inc.
 Consultant & Service

Zeev Haskal is the CEO of Mega Group Inc, a specialized firm that provides a full range of investigative and security services to clients in virtually all areas of industry and business.

4605 Lankershim Blvd Suite 800
 North Hollywood, CA 91602-1878 United States
 8183925740
 zeev@megagroupinvestigations.com
 www.megagroupinvestigations.com

Santa Monica 2 (GL), Group Leader Acceleration Meeting, Century City 3,

**Ian Heimanson (GL)**

Attorney at Law
Heimanson & Wolf LLP
Attorney

I am a trial attorney providing contingency fee based representation to plaintiffs in matters involving personal injury, automobile accidents, cases, premises liability, products liability, and professional malpractice/negligence.

1880 Century Park East Suite 508
Los Angeles, CA 90067 United States
3104461522
iheimanson@hwllplaw.com
www.hwllplaw.com

Century City 3 (GL), Santa Monica 5, Rancho Park, Group Leader Acceleration Meeting,

**Laura A Hicks (AGL)**

President
SBL Consulting, Inc.
Consultant & Service

Helping business professionals do three things: 1) Hire the right people for the right job by utilizing online assessments 2) Increase referrals with strategic partners with a proven 10 step system 3) Offer workshops for #1 and #2

22735 Inspiration Pt
Canyon Lake, CA 92587 United States
(310) 961-6136
laura@sblconsulting.com
www.SBLconsulting.com

South Bay Women's Affinity Group (AGL), Group Leader Acceleration Meeting, Riverside, Collaboration of Professional Women Inland Empire Affinity Group,

**David Hilton (EC, TM)**

Principal & COO
Kaye Capital Management
Investment Advisor

David Provides 401(k) and other corporate retirement plans to businesses with 50-2000 employees

713 Campus Square West
El Segundo, CA 90245 United States
3102075293
dhilton@kayecapital.com
www.kayecapital.com

Valley Business Professional Services Affinity Group (TM), Las Vegas 2, Mid City,

**David Holtz (GL, EC)**

Former IRS Attorney
Holtz, Slavett & Drabkin, APC
Attorney

David is a principal of a tax litigation firm consisting exclusively of Former IRS Attorneys. Our practice is limited to all aspects of tax litigation including tax assessment defense, collection defense and criminal defense.

10940 Wilshire Blvd, Suite 2000
Los Angeles, CA 90024 United States
(310) 550-6200
david.holtz.dtla2.provisors@menti-health.com
www.hsdtlaxlaw.com

Beverly Hills 2 (EC), Tax Masters Affinity Group, Downtown Los Angeles 2 (GL), Group Leader Acceleration Meeting,

**Preston Howard (GL)**

Principal
Rose City Realty Finance
Banking & Finance

I specialize in hard money and multi-family apartment financing from \$250,000 - \$20,000,000. If the equity is there and the title is clean, in three weeks or less we can get you the cash that you need.

1055 E Colorado Blvd Suite 500
Pasadena, CA 91106-2371 United States
626-240-4610
howardpr@rosecityrealtyinc.com
www.rosecityrealtyinc.com

Pasadena 5 (GL), Pasadena 3, Group Leader Acceleration Meeting, Valley Estate and Succession Planning Affinity Group, San Gabriel Valley Real Estate Affinity Group (EC),



Jesse Israel CFP®, CLU®, ChFC® (GL)

Financial Advisor/Planner
Capstone Partners
Financial Service

I work with individuals, families, and small businesses and focus on retirement planning, college funding, investments, employee benefits, and life, disability, and long-term care insurance.

15612 Morrison St.
Sherman Oaks, CA 91403 United States
(310) 800-5277
jesseisrael@capstone.financial
<https://www.capstonepartnersfinancial.com/>

Group Leader Acceleration Meeting, Sherman Oaks 3 (EC), Sherman Oaks 4 (GL),



Mark Jaffe (GL)

President
Strategic Growth Consulting
Consultant & Service

New Revenue Now! Mark Jaffe and Strategic Growth Consulting specialize in strategic revenue growth. We help CEOs grow their companies by discovering and leveraging their true core value proposition to realize new and expanded revenue streams.

1018 2nd St. #6
Santa Monica, CA 90403 United States
(818) 625-3517
mark@markjaffe.com
www.markjaffe.com

Century City 2, Innovation Affinity Group (EC), Silicon Beach (GL), Capital Markets Affinity Group, Group Leader Acceleration Meeting,



Dotty Kaminsky (Regional Director)

Regional Director/Southern California
ProVisors

As Regional Director I provide support to our GL's and I serve as a team resource to all our Members with the foremost goal of ensuring positive membership experiences. In addition, I identify and qualify ideal "Top Tier Professionals."

15260 Ventura Blvd Suite 1700
Sherman Oaks, 91403
818-231-8595
dottyk@provisors.com

ProVisors (RD), LGBTQ+Allies Affinity Group, Pasadena 3 (RD), Downtown Los Angeles 4 (RD), Mid City (RD), Downtown Los Angeles 1 (RD), Downtown Los Angeles 2 (RD), Downtown Los Angeles 3 (RD), Downtown Los Angeles 5 (RD), West Hollywood (RD), Rancho Park (RD), Pasadena 1 (RD), Beverly Hills 5 (RD), Pasadena 2 (RD), Pasadena 6 (RD), Beverly Hills 1 (RD), Pasadena 4 (RD), Beverly Hills 2 (RD), Pasadena 5 (RD), Beverly Hills 3 (RD), Glendale 2 (RD), Beverly Hills 4 (RD), Glendale 1 (RD), Women's Affinity Group (RD), Pasadena Estate and Succession Planning Affinity Group (RD), San Gabriel Valley Real Estate Affinity Group (RD), East Valley Women's Affinity Group (RD), East Valley Lawyers Affinity Group (RD), Hollywood (RD), Universal City (RD), Burbank (RD), Studio City (RD),



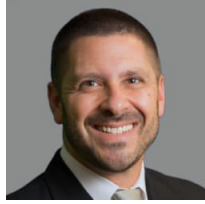
Chris M. King (GL)

Facilitator, Coach, Speaker
Status Flow
Consultant & Service

Clients call us when they have big dreams and little time. Executive coach, facilitator, speaker, and executive witch doctor Chris M. King quickly makes the seemingly impossible a reality for business teams and professional individuals.

7727 W. Manchester Ave. #3
Playa del Rey, CA 90293 United States
(323) 977-8766
chris@chrismking.com
<https://chrismking.com>

Silicon Beach 2 (GL), Irvine Central, Group Leader Acceleration Meeting, Consultants & Coaches Affinity Group, Innovation Affinity Group,



Steven Klein (GL)
 Managing Partner
 Greystone Insurance Agency
 Insurance

Insurance is very personal. My goal is to educate & empower my clients to make confident, fully-informed decisions about their coverage. Specializing in personal lines, commercial lines (industry agnostic) and professional lines (E&O).

17547 Ventura Boulevard Suite 204
 Encino, CA 91316 United States
 (888) 705-5181
 steven@greystoneinsured.com
 www.GreystoneInsured.com

Santa Monica 3 (GL), Group Leader Acceleration Meeting, Santa Monica 5,



Robert M. Klein (GL)
 Lawyer / Attorney at Law
 Law Offices of Robert M. Klein
 Attorney

Personal injury lawyer representing a person hurt in a car accident, motorcycle, or bicycle accident, a pedestrian hit by a car; a dog bite, a slip and fall, or a wrongful death case.

11693 San Vicente Blvd., #302
 Los Angeles, CA 90049 United States
 (424) 901-1234
 robert@rkleinlaw.com
 Law Offices of Robert M. Klein

Encino 2, Sherman Oaks 1 (GL), Group Leader Acceleration Meeting,



Jeff Kobulnick (GL)
 Shareholder
 Lewitt Hackman
 Attorney

Jeff assists clients with the development, protection and enforcement of trademark rights worldwide, and regularly litigates claims for trademark and copyright infringement and related claims.

16633 Ventura Boulevard, 11th Floor
 Encino, CA 91436 United States
 (818) 907-3090
 jkobulnick@lewithhackman.com
 www.lewithhackman.com

Group Leader Acceleration Meeting, Valley Lawyers Affinity Group, Branding, Licensing, and IP Affinity Group, Woodland Hills 4 (GL), Encino 2,



Justin Krane (GL)
 Certified Financial Planner
 Krane Financial Solutions
 Investment Advisor

I am the entrepreneur's financial planner. I unite money with life and business. I am independent and am a fee only fiduciary in the wealth management space.

11500 Olympic Blvd Suite 400
 Los Angeles, CA 90064-1584 United States
 3109890934
 justin@kranefinancialsolutions.com

Group Leader Acceleration Meeting, West Los Angeles (GL),



Jesse A. Laikin, SIOR (GL)
 Principal Emeritus, DRE# 00781096
 Lee & Assoc Comm. Real Estate
 Real Estate

Commercial Real Estate Broker for over 43 years specializing in office, industrial and investment properties. Representing Landlords and Tenants, Buyers and Sellers with expansion, disposition or relocation requirements.

21250 Hawthorne Blvd.
 Suite 700
 Torrance, CA 90503 United States
 (310) 768-8800, ext 1765
 jlaikin@leelalb.com

Group Leader Acceleration Meeting, South Bay Classic (GL), Culver City, LAX/Long Beach Real Estate Affinity (EC),

**Regina F. Lark PhD (AGL, EC)
(she/her)**

CEO
A Clear Path, LLC
Consultant & Service



Estate & hoarding clear-out, chronic disorganization, ADHD. Help families and individuals declutter/organize physical space (home, storage unit, garage). Accredited senior move manager. Online estate auctions. Residential inventory. TEDx speaker.

2355 Westwood Blvd., #359
Los Angeles, CA 90064-2109 United States
(310) 710-3379
regina@aclearpath.net
www.aclearpath.net

East Valley Women's Affinity Group, LGBTQ+Allies Affinity Group (AGL), Women's Affinity Group, Real Estate Group - Greater Los Angeles, Pacific Business Corridor 1 (TM), LA Estate and Succession Planning Affinity Group (TM), South Bay Women's Affinity Group (EC), LAX/Long Beach Real Estate Affinity (GLA), Bay Area Women's Affinity Group, Chicago Women's Affinity Group, Silicon Valley Women's Affinity Group, Collaboration of Professional Women Inland Empire Affinity Group, East Bay Women's Affinity Group, Los Angeles DEI (EC), Orange County Real Estate Affinity Group, Estate and Succession Planning Affinity Group (EC), Group Leader Acceleration Meeting,

Griffin Lee (GL)

Attorney
Griffin Lee Law
Attorney



Clients rely on Griffin for guidance on all aspects of intellectual property including patents, copyrights, trademarks, & fashion law. His practice focuses on the preparation/prosecution of patent applications before the U.S. Patent and Trademark Office.

3300 Foothill Blvd. #12360
La Crescenta, 91214
(424) 353-2226
griffin@griffinleelaw.com

Group Leader Acceleration Meeting, Pasadena 6, East Valley Lawyers Affinity Group, Burbank (GL),

Kristy Melton (GL)

Commercial Finance Broker
Heritage Commercial Funding Corp
Banking & Finance



Finance Broker with over 20 years experience specializing in Alternative Funding options for Businesses (50k-20M): Factoring, Asset Based Lending, Purchase Order Financing, Revenue Based Financing, Bridge Loans or Lines of credit

365 E. Ave. de los Arboles, #131
Thousand Oaks, 91360
(805) 231-0562
kmelton@heritagecommercialfunding.com
www.heritagecommercialfunding.com

Valley Distributors & Manufacturers Affinity Group, South Bay Women's Affinity Group, Camarillo 1, Start Up and Entrepreneurship Affinity Group, Family Business Affinity Group, Los Angeles Valley 1 (GL), Group Leader Acceleration Meeting,

Janice Miller (GL, TM)

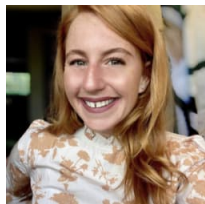
Managing Partner
Miller Haga Law Group, LLP
Attorney



Miller Haga Law Group, LLP, are attorney's that provide Innovative General Counsel Services® in the areas of business formation to wind down, corporate & real estate transactions, employment, licensing & emerging areas of the law. Coopertition® expert.

23901 Calabasas Road, Suite 2001
Calabasas, CA 91302 United States
(818) 591-4200
jmiller@millerhaga.com
millerhaga.com

Warner Center 1 (GL), Conejo Valley Real Estate Affinity Group, Los Angeles DEI, Valley Women's Affinity Group, Group Leader Acceleration Meeting, Westlake Lawyers Affinity Group (TM), Valley Lawyers Affinity Group (EC), Westlake 2,



Paige Murphy
Regional Director
ProVisors

As a Regional Director, I provide support to our Group Leaders and am a resource to all our Members with the foremost goal of ensuring positive membership experiences.

15165 Ventura Blvd Suite 425
Sherman Oaks, CA 91403-3371 United States
563-542-6022
paigem@provisors.com

ProVisors (RD),



Mayer Nazarian (GL)
Transactional Tax Attorney
NAZARIAN LAW & TAX GROUP, INC.
Attorney

Mr. Nazarian assists individuals and businesses by identifying optimal tax strategies from formation, throughout operations, until transfer, sale or dissolution.

12121 Wilshire Blvd, Suite 525
Los Angeles, CA 90025 United States
(310) 400-0102
mayer@nlawtax.com
www.nlawtax.com

West Los Angeles 2 (GL), LA Estate and Succession Planning Affinity Group, Santa Monica 6, Group Leader Acceleration Meeting,

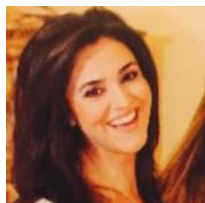


David Painter (GL)
Founder
Advisors in Placement
Consultant & Service

Transforming your search for senior housing by delivering a compassionate and client centered approach that guides you to the most appropriate housing option.

449 W. Foothill Blvd
#309
Glendora, CA 91741 United States
(626) 470-3396
david.painter@advisorsinplacement.com
www.advisorsinplacement.com

LA Estate and Succession Planning Affinity Group, Pasadena 2 (GL), Seniors and Special Needs Affinity Group, Group Leader Acceleration Meeting, Beverly Hills 3,



Rebecca Pedoem (Regional Director)
Regional Director- West LA
ProVisors
Consultant & Service

As ProVisors Regional Director, I provide support to our Group Leaders and am a resource to all our Members with the foremost goal of ensuring positive membership experiences.

15165 Ventura Blvd #425
Sherman Oaks, 91403
(424) 243-6030
rebeccap@provisors.com

ProVisors (RD),



Kate Pletcher (GL, EC)
Founder/CEO
Treehouse Partners
Human Resources

I am the Founder and CEO of Treehouse Partners, an LA-based recruiting firm with clients across industries from CPG, to consulting, to tech, to aerospace/defense and more. We help our clients find top talent across strategy, marketing, finance, and more.

2554 Lincoln Blvd
Venice, 90291
8778948621
kate@thetreehousepartners.com

Century City 2 (TM), Innovation Affinity Group, Venice (GL), Group Leader Acceleration Meeting,



Whit Prouty (GL)
Residential Realtor
Compass
Real Estate

Whit Prouty specializes in home sales and purchases by working with Attorney Clients, Business Manager & CPA clients, Fiduciaries, Trusts, and Conservators. See www.whitprouty.com for more information.

9454 Wilshire Blvd. Ground Floor
Beverly Hills, CA 90212 United States
(310) 962-6942
whit@whitprouty.com
www.whitprouty.com

LA Estate and Succession Planning Affinity Group,
Century City 1, Westwood Village (GL), Group
Leader Acceleration Meeting,



Scott Rahn (GL, EC, Host)
Managing Partner
RMO LLP - Probate and Trust Estate
Litigation
Attorney

I am a trial lawyer who does only litigated trust, probate, estate and conservatorship matters. We represent individuals, including beneficiaries, trustees/executors/conservators, institutional trustees (trust companies), and professional fiduciaries

901 Bringham Avenue
Brentwood, CA 90049
Los Angeles, CA 90049 United States
424.320.9444 619.323.3200 949.226.8511
rahns@rmolawyers.com
[/www.member.provisors.com/scotterahn](http://www.member.provisors.com/scotterahn)

San Francisco 14, Group Leader Acceleration Meeting, Westside 3 (Host), San Diego Lawyers Affinity Group, Century City 7 (EC), Westside 2 (GL), East Valley Lawyers Affinity Group, East Bay Lawyers Affinity Group, Atlanta Lawyers Affinity Group,



Ivy Rappaport (GL) (she/her)
Agent
New York Life Insurance Company
Insurance

Ivy helps individuals and businesses using life, disability, long term care insurance for individual/family needs, and business buy/sell and succession planning. She also works with her clients to create tax free and guaranteed lifetime retirement income.

6300 Wilshire Blvd Suite 2010
Los Angeles, CA 90048-5221 United States
(323) 782-3032
irappaport@ft.nyl.com
www.IvyRappaport.com

Calabasas, LGBTQ+Allies Affinity Group, Women's Affinity Group, LA Estate and Succession Planning Affinity Group, Beverly Hills 4 (GL), Seniors and Special Needs Affinity Group, Valley Women's Affinity Group,



Sarah Reznick (GL)
Financial Advisor, CFP®, CRPC®, CHFC®
Sherfina Advisors with Ameriprise
Financial Service

As a CFP®, I act as a financial Sherpa helping people climb the mountain of retirement and, more importantly, get down safely.

275 East Hillcrest Drive, Suite 223
Thousand Oaks, CA 91360 United States
(805) 454-7599
sarah.reznick@ampf.com
ameripriseadvisors.com/team/sherfina-advisors

Valley Estate and Succession Planning Affinity Group, Westlake 8 (GL), Group Leader Acceleration Meeting, East Valley Women's Affinity Group, Valley Business Professional Services Affinity Group, Camarillo 1,



Bill Richardson (AGL, EC)
President
Assured SPC
Consultant & Service

Assured SPC assists healthcare and related organizations of all sizes achieve regulatory compliance, reduce IT and data security risks, maintain business continuity, and lower cost. We are healthcare compliance experts with extensive experience with HIPA

4211 SW Chesapeak Ave.
Portland, OR 97239 United States
(805) 796-7850
brichardson@assuredspc.com
www.assuredspc.com

Innovation Affinity Group, Group Leader Acceleration Meeting, Portland 1 (EC), Healthcare Advisors Affinity Group (AGL),

**Doug Ridley (GL) (he/him)**

Criminal Defense Attorney
Ridley Defense, APC
Attorney

Clients in the criminal justice system experience the scariest moments of their lives. I use my background as a former Deputy District Attorney to calculate the best criminal defense and shepherd my clients through this difficult time.

165 E. High Street, Suite 200
Moorpark, CA 93021 United States
(805) 208-1866
doug@ridleydefense.com
www.ridleydefense.com

Santa Barbara 1, Camarillo 1, Westlake Lawyers Affinity Group, Moorpark (GL),

**Brian Ross (AGL)**

Partner
Ross Legal Corporation
Attorney

Brian is an experienced (25+ years) general counsel for Internet, technology, cannabis other emerging industries. Focus on corporate governance, SaaS and IP, business agreements, data privacy/security, general counsel support.

16133 Ventura Boulevard, Penthouse
Encino, CA 91436 United States
(818) 906-9667
brian@rosslegalcorp.com
www.rosslegalcorp.com

Los Angeles Lawyers and Legal Professionals Affinity Group, Silicon Beach, SoCal Cannabis Affinity Group (GL), Valley Lawyers Affinity Group, Start Up and Entrepreneurship Affinity Group, Bay Area Cannabis Affinity Group, Group Leader Acceleration Meeting,

**Francis Ryu (GL)**

Attorney at Law
Ryu Law Firm
Attorney

I am a business lawyer and litigator, with an emphasis on representing Korean American entrepreneurs and businesses.

915 Wilshire Boulevard Suite 1775
Los Angeles, CA 90017 United States
(323) 931-5270
francis@ryulaw.com

Beverly Hills 5, Rancho Park (GL), Group Leader Acceleration Meeting,

**David Schnider (GL)**

Partner
Nolan Heimann LLP
Attorney

Sophisticated advice; Simple solutions. David is a trademark lawyer who helps his clients get the most out of their brands. David helps with registration, enforcement, licensing, and corporate work all to help clients maximize the value of their IP.

16000 Ventura Blvd. Ste. 1200
Encino, CA 91436 United States
8185745710
dschnider@nolanheimann.com
www.nolanheimann.com

Valley Lawyers Affinity Group, Group Leader Acceleration Meeting, Encino 4 (GL), Sherman Oaks 1, Valley Distributors & Manufacturers Affinity Group, Branding, Licensing, and IP Affinity Group, SoCal Cannabis Affinity Group,

**Amanda Scott (GL)**

President
Solution Harbor Inc
Human Resources

I am a national retained recruiter. I work with businesses to hire key employees that will drive change at their companies - mostly in construction and manufacturing. Positions I work on include CEO, GM, President, COO, VP HR, Sales, Marketing.

Bend, OR 97702 United States
(619) 708-2295
amanda@solutionharbor.com

Valley Distributors & Manufacturers Affinity Group, Family Business Affinity Group, New York Women's Affinity Group, Transactions & Transitions, San Francisco 14, Group Leader Acceleration Meeting, Collaboration of Professional Women Orange County Affinity Group, Bay Area Women's Affinity Group, Consultants & Coaches Affinity Group, Bay Area Distributors & Manufacturers Affinity Group, Westside (GL), Distributors & Manufacturers Affinity Group,

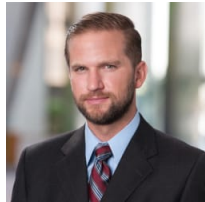
**Joe Seetoo (GL; EC)**

Senior Vice President
Morton Wealth
Investment Advisor

As a financial planner, I practice at the intersection of wealth management and business exit planning. Our planning covers cashflow planning, retirement, estate, tax, insurance, charitable and educational needs, investment mgmt including alternatives.

27200 Agoura Road Suite 200
Calabasas, CA 91301-5127 United States
8185916219
jseetoo@mortonwealth.com
<https://mortonwealth.com/>

Woodland Hills 1 (GL), Encino 3 (EC), Group Leader Acceleration Meeting,

**Kevin Shaw (GL)**

Nevers, Palazzo, Packard, Wildermuth & Wynner
Attorney

Kevin Shaw counsels businesses in the areas of corporate governance, mergers and acquisitions, financings and general business matters. He is particularly experienced at negotiating and structuring licensing and distribution agreements.

31248 Oak Crest Drive Suite 200
Westlake Village, CA 91361-5671 United States
8188799700
kshaw@npwlaw.com

Westlake Estate and Succession Planning Affinity Group, Camarillo 1, Group Leader Acceleration Meeting, Westlake 4 (GL), Mergers & Acquisitions 2,

**Ben Sheppard (GL)**

Managing Director
BRG
Accountant

Ben Sheppard is a CPA and Managing Director with the international consulting firm BRG. Ben has developed into a premier, well-tested CPA expert witness and forensic investigator, testifying over 80 times in depositions, trials and arbitrations.

25705 Hood Way
Los Angeles, CA 91381 United States
(661) 755-7144
ben.w.sheppard@sbcglobal.net
www.thinkbrg.com

South Bay 3, Entertainment 2 (GL), Group Leader Acceleration Meeting,

**Robert Sniderman (GL)**

President
HR Focus USA
Human Resources

Robert Sniderman, Ph.D., SPHR, is President of HRfocus, providing Consultative Services at the INTERSECTION of Business and Human Resources. Organizational/Business/Human Resource consulting services; known as an executive and owner's coach, facilitator

PO Box 4502
Valley Village, CA 91617-0502 United States
(818)618-6044
rsniderman@hrfocususa.com

Sherman Oaks 1, Group Leader Acceleration Meeting, Glendale 2 (GL),

**Randi Sorenson CPA (GL)**

Business Problem Solver
Strategic Business Advisory & Tax
Consultant & Service

Using my expertise as a CPA, I am committed to strategizing with business owners to save time, increase efficiency, and gain skills and knowledge they need, allowing their businesses to grow and become more profitable.

3835 E. Thousand Oaks Blvd. #R356
Westlake Village, CA 91362 United States
(805) 491-4419 X201
randi@strategicbusiness.com
www.strategicbusiness.com

Group Leader Acceleration Meeting, Valley Women's Affinity Group, Westlake 6 (GL), Moorpark,

**Lewis Stanton (AGL)**

Managing Partner
Stanton Associates LLC
Consultant & Service

Stanton Associates is a team of several-time CEOs who have actually run companies, not just consultants. We deliver a dramatic increase in a company's valuation, especially in anticipation of a liquidity event. We don't let PE firms steal the company!

717 W Olympic Boulevard, #2504
Los Angeles, CA 90015-1687 United States
(818) 752-6500
lstanton@stantonassoc.com
www.stantonassoc.com

Downtown Los Angeles 1 (EC), Middle Market Affinity Group (AGL), Capital Markets Affinity Group, Group Leader Acceleration Meeting, Transactions & Transitions,

**Jacob Stein (AGL)**

Partner
Aliant, LLP
Attorney

Private client practice with a focus on sophisticated asset protection planning and international taxation

16000 Ventura Blvd Suite 1000
Encino, CA 91436-2762 United States
(818) 933-3838
jstein@aliantlaw.com
https://www.aliantlaw.com

Valley Lawyers Affinity Group (AGL), Century City 3, Group Leader Acceleration Meeting,

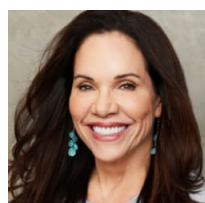
**Bruce Stein (AGL, TM, EC)**

The Paladin of Real Estate | Have
Smartphone Will Travel
Real Property Partners, Inc.
Real Estate

Working with aging baby boomers and silent generation real estate investors requires a keen understanding of their unique needs and challenges. As an advisor, I help ensure their portfolios thrive despite life's uncertainties.

5737 Kanan Road, #553
AGOURA HILLS, CA 91301 United States
(818) 521-6635
bstein@realproppartners.com

Group Leader Acceleration Meeting, Tax Masters Affinity Group, DFW Real Estate Affinity Group, Valley Real Estate Affinity Group (TM), Westlake Estate and Succession Planning Affinity Group, Westlake 3, Valley Estate and Succession Planning Affinity Group, Conejo Valley Real Estate Affinity Group (AGL), DCM Real Estate Affinity Group, Chicago Real Estate Affinity Group, Atlanta Real Estate Affinity Group, Bay Area Real Estate Affinity Group,

**Marty Stevens-Heebner (AGL)**

Founder & CEO
Clear Home Solutions
Consultant & Service

1st nationally accredited senior move managers in L.A., focusing on estate clear outs, hoarding situations, move to assisted living and online estate sales. We help older adults and their families with compassion and know-how.

13351-D Riverside Drive Suite 317
Sherman Oaks, CA 91423 United States
(818) 376-0125
marty@clearhomesolutions.com
www.ClearHomeSolutions.com

Beverly Hills 2, Women's Affinity Group, Real Estate Group - Greater Los Angeles, Valley Estate and Succession Planning Affinity Group, San Gabriel Valley Real Estate Affinity Group, Seniors and Special Needs Affinity Group (AGL), Conejo Valley Real Estate Affinity Group, Family Business Affinity Group, Westlake Estate and Succession Planning Affinity Group, Group Leader Acceleration Meeting, Valley Women's Affinity Group, East Valley Women's Affinity Group, Valley Real Estate Affinity Group,

**Scott Nell - The Nell Team (GL)**

REALTOR, Residential - San Fernando Valley
Equity Union Real Estate
Real Estate

Buy or sell, trust Scott Nell for your residential real estate needs in the San Fernando Valley and surrounding. Think of me and my amazing team as your 1-stop shop for all things real estate!

16820 Ventura Blvd., Suite TNT
Encino, CA 91436 United States
(818) 522-2862
scott@thenellteam.com

LAX/Long Beach Real Estate Affinity, Real Estate Group - Greater Los Angeles, Universal City (GL), Sherman Oaks 1, San Gabriel Valley Real Estate Affinity Group, Seniors and Special Needs Affinity Group, Group Leader Acceleration Meeting, Non-Profit Affinity Group, Family Business Affinity Group, Valley Real Estate Affinity Group,



Will Tiao (GL)
Multifamily Investment Advisor
Tiao Properties
Real Estate

Will Tiao is the director of the commercial division of the Collective Realty and the owner/broker of Tiao Properties, a property management and investment company. He specializes in multifamily investment properties for sale and management.

2658 Griffith Park Blvd #418
Los Angeles, CA 90039 United States
323.363.1096
will@tiaoproperties.com
www.tiaoproperties.com

Valley Real Estate Affinity Group (EC), Group Leader Acceleration Meeting, San Gabriel Valley Real Estate Affinity Group, Real Estate Group - Greater Los Angeles, Glendale 2, Hollywood (GL),



Adam Treiger (GL)
Partner
Stowell Zeilenga Ruth Vaughn & Treiger
Attorney

Adam K. Treiger concentrates his practice at the intersection of business law and employment law.

4580 East Thousand Oaks Blvd., Suite 190
Westlake Village, CA 91362-7213 United States
(805) 446-7612
atreiger@szrlaw.com
www.szrlaw.com

Westlake Lawyers Affinity Group, Westlake 3 (GL),



John Troxel (GL)
Investigations, Computer Forensics
Risk Control Strategies
Consultant & Service

Experts in computer forensics, investigation services for attorneys.

1800 Bridgegate Street
Suite 203
Westlake Village, CA 91361 United States
(805) 445-1498
jtroxel@riskcontrolstrategies.com
Risk Control Strategies

Encino 1, Camarillo 1, Ventura (GL), Group Leader Acceleration Meeting,



Jim Twerdahl (AGL)
Managing Director
James S. Twerdahl & Associates, Inc.
Consultant & Service

MANAGEMENT CONSULTANT – CHANGE AGENT. Former corporate CEO. Strategic planning; market planning; organizational development. Outsourced CMO. M&A advisor. Interim CEO. Director, Advisor, Coach, Mentor. Sourcing and QC in China.

214 S McCadden Place
Los Angeles, CA 90004-1054 United States
(323) 931-8538
jim@twerdahl.net
www.TwerdahlAssoc.com

Group Leader Acceleration Meeting, Mid City, Distributors & Manufacturers Affinity Group, Innovation Affinity Group (EC), Branding, Licensing, and IP Affinity Group, Valley Distributors & Manufacturers Affinity Group (AGL), Capital Markets Affinity Group, Transactions & Transitions,



Emily Vincent (GL)
President
Douglas M. Farr & Company, Inc.
Consultant & Service

Emily is a third-party retirement plan administrator for 401k, Profit Sharing, Cash Balance and Defined Benefit Pension Plans. Her clients include self-employed individuals as well as business owners with 1 to 100 employees. Call me for tax savings!

5721 Canyonside Road
La Crescenta, CA 91214 United States
(818) 957 - 0845
emily@dmfarr.com
www.dmfarr.com

Pasadena 7 (GL), East Valley Women's Affinity Group, Pasadena 2, Group Leader Acceleration Meeting,



Mark Wald (EC, AGL)
Partner
SPRCHRGR - "get there faster!"
Accountant

We provide enterprise-level accounting and finance services to transform the way SMB's operate and position them for optimized growth. We also specialize in business process streamlining, custom software development & implementation, APIs.

8605 Santa Monica Blvd, PMB 66299
West Hollywood, CA 90069-4109 United States
3106256262
mwald@sprchrgr.com
http://sprchrgr.com

Group Leader Acceleration Meeting, LGBTQ+Allies Affinity Group, Innovation Affinity Group (AGL), Silicon Beach (EC), SoCal Cannabis Affinity Group,



Haze Walker (AGL)
Partner
Lawrence Financial
Financial Service

We provide financing solutions for small to mid-size companies servicing all industries nationally. Our goal is to provide creative attractive funding options based on our clients specific needs. Specializing in asset based lending, accounts receivable l

6309 Hannum Avenue
Culver City, CA 90230-6133 United States
(760) 716-1900
haze@hazegwalker.com
www.lawrencefinancial.com

Transactions & Transitions, Mergers & Acquisitions 2, Capital Markets Affinity Group (AGL), Group Leader Acceleration Meeting,

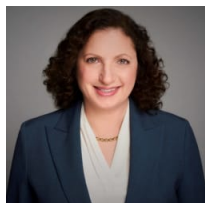


Adam Walker (GL)
Full Circle Business Law, PC
Attorney

I'm a business attorney who focuses on contracts, entity formations, shareholder and owner issues, purchases and sales of businesses, and other related corporate and LLC matters.

425 East Colorado Street
Suite 660
Glendale, CA 91205 United States
(818) 247-2036
adam@fullcirclebl.com
www.FullCircleBL.com

Glendale 1 (GL), East Valley Lawyers Affinity Group, Group Leader Acceleration Meeting, Burbank,

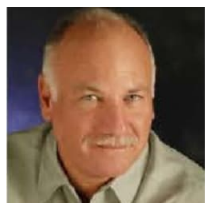


Michele Weiss (AGL, EC, TM)
Principal
Holtz Slavett & Drabkin
Attorney

Tax attorney working with businesses, business owners, and investors to resolve their tax matters with federal, state, and local tax agencies. Former senior attorney, IRS large & mid-sized business division, CA Bar Certified Specialist in Tax Law..

10940 Wilshire Blvd, Suite 2000
Los Angeles, CA 90024 United States
3105506200
mweiss@hsdtaxlaw.com
www.hsdtaxlaw.com

Women's Affinity Group, Los Angeles Lawyers and Legal Professionals Affinity Group (AGL), Beverly Hills 3 (TM), LGBTQ+Allies Affinity Group, Group Leader Acceleration Meeting, Healthcare Advisors Affinity Group,



Harold Weitzberg (AGL,EC)
President
Weitzberg Consulting Inc
Consultant & Service

Weitzberg Consulting provides brand marketing and business development, licensing and IP development consulting since 1994. We work with Celebrities and other licensors, as well as businesses and services building brands and IP. See our full BIO.

2065 Flamingo Drive
Costa Mesa, CA 92626-4767 United States
(714) 313-6334
harold@weitzbergconsulting.com
WeitzbergConsulting.com

International Business Affinity Group, Branding, Licensing, and IP Affinity Group (AGL), Group Leader Acceleration Meeting, Newport Center,



Scott Williams (GL)
 Managing Shareholder
 The Small Business Law Firm, P.C.
 Attorney

A full service law firm focused on the legal needs of today's California small businesses. From start-ups to established businesses, transactional and litigation, we are the right firm.

299 W Hillcrest Drive Suite 214
 Thousand Oaks, CA 91360-7839 United States
 (805) 778-0206
 swilliams@smallbusinesslaw.org

Westlake 7, Conejo (GL),



Gregg Wind (AGL)
 Partner
 Kallman + Logan & Company, LLP
 Accountant

I provide tax planning, tax preparation and estate planning services to small and medium sized businesses and their owners and to high net worth entrepreneurs and investors.

125 South Barrington Place
 Los Angeles, CA 90049-3305 United States
 (310) 909-1900
 gregg@klcpcpas.com

LA Estate and Succession Planning Affinity Group (AGL), Rancho Park, Group Leader Acceleration Meeting,



Mary McDonald Winners (AGL, TM)
 Commissioner, CEO, Geriatric Care
 Manager, MSG, CPG
 About Senior Solutions
 Consultant & Service

Serve older adults & their families and professionals.

525 South Myrtle Ave 218
 Monrovia, CA 91016-6142 United States
 (626) 359 - 0108
 mary@aboutseniorsolutions.com
 aboutseniorsolutions.com

Pasadena 2, Seniors and Special Needs Affinity Group, Pasadena Estate and Succession Planning Affinity Group (AGL),

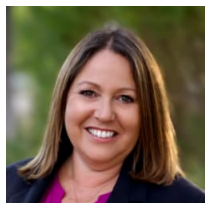


Grant Withers (GL)
 Private Wealth Advisor
 Capital Group - Private Client Services
 Investment Advisor

As a Private Wealth Advisor at Capital Group Private Client Services, I work directly with high net worth individuals and families to create customized plans for protecting and growing their wealth, often across multiple generations. I also help nonprofit

333 S. Hope Street 46th Floor
 Los Angeles, CA 90071 United States
 2134869138
 grnw@capgroup.com
<https://www.capitalgroup.com/pcs/>

Group Leader Acceleration Meeting, Century City 1 (GL), Entertainment 2 (Host),

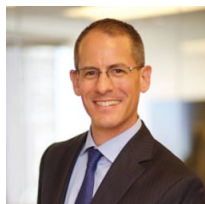


Laura Withrow (AGL) (she/her)
 Employment Law Attorney
 Withrow Employment Law, P.C.
 Attorney

I am a management-side employment attorney representing small and mid-size employers in California. My practice focuses on litigation defense, representation before administrative agencies, management training, and counseling on compliance issues.

555 Marin Street, Suite 140
 Thousand Oaks, CA 91360 United States
 (805) 630-8825
 laura@withrowemploymentlaw.com
 www.withrowemploymentlaw.com

Valley Business Professional Services Affinity Group, Westlake Lawyers Affinity Group (AGL), Westlake 2, Group Leader Acceleration Meeting, Valley Women's Affinity Group,



Jeffrey Wolf (GL)

Partner
Heimanson & Wolf
Attorney

Personal Injury Trial Lawyer

1880 Century Park East Suite 508
Los Angeles, CA 90067 United States
(310) 446-1522
jwolf@hwllplaw.com
<http://hwllplaw.com/>

Group Leader Acceleration Meeting, Santa Monica 6,
Century City 2 (GL), Valley Lawyers Affinity Group,
West Los Angeles 2 (Candidate),



Jae Wu (AGL, EC, GLA) (she/her)

Co-Owner
Heyler Realty
Real Estate

Providing full residential real estate and strategic advisory service to homeowners and home buyers and have a certification in probate real estate and able to help attorneys who work with probate and trustee sales.

10659 W Pico Blvd
Los Angeles, CA 90064-2222 United States
(310) 997-4323
jae@heyler.com
www.heylerrealty.com

LA Estate and Succession Planning Affinity Group (EC), Santa Monica 5 (GLA), Women's Affinity Group (AGL), Group Leader Acceleration Meeting, Valley Women's Affinity Group, Real Estate Group - Greater Los Angeles (EC),